

CPST

Test Report

No. C190401013002

Date: Apr 04, 2019

Page 1 of 7

Applicant: FOSHAN WOLONG CHEMICAL CO.,LTD

Applicant Address: Nanhai National Demonstration Eco-Industrial Zone, Danzao Town, Nanhai Dist., Foshan, Guangdong, China (Mainland)

The following samples were submitted and identified on behalf of the clients as

Sample Name: Powder paint
Model: H10513
Sample Quantity: 1 bag
CPST Internal Reference No.: C190401013
Sample Received Date: Apr 01, 2019
Test Period: Apr 01, 2019 to Apr 04, 2019

CONCLUSION :

<u>TESTED SAMPLES</u>	<u>TEST ITEM</u>	<u>RESULT</u>
Powder paint	1.RoHS Directive 2011/65/EU Annex II amending Annex (EU)2015/863 and amending Annex (EU)2017/2102	
	— Lead, Cadmium, Mercury, Hexavalent Chromium, PBBs and PBDEs Content	PASS
	—Di-(2-ethylhexyl) phthalate(DEHP), Benzylbutyl phthalate(BBP), Dibutyl phthalate (DBP), Diisobutyl phthalate(DIBP) Content	PASS



Signed for and on behalf of
Euronos Consumer Products Testing Service Co., Ltd

TESTED BY :

REVIEWED BY:

APPROVED BY:

Andy Wang

Sunshine Liu

Will Pan

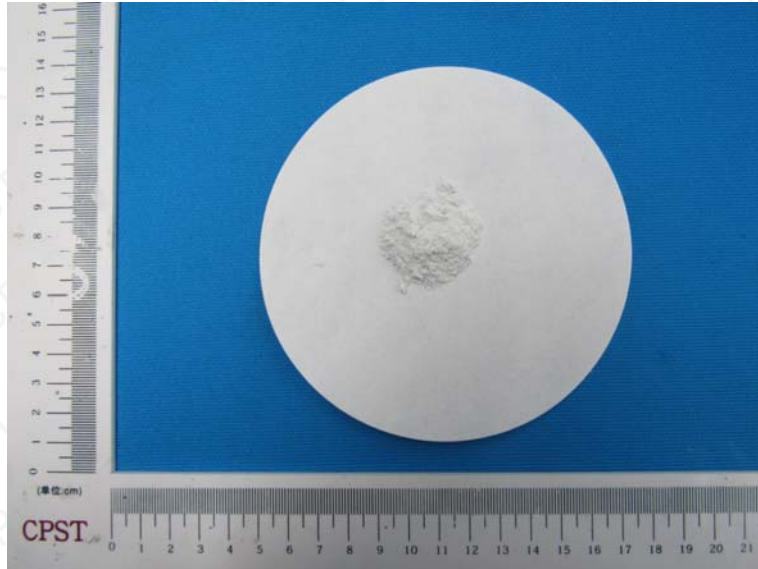
Wang Guang Yu, Andy
Project Leader

Liu Xiao Fang, Sunshine
Report Reviewer

Pan Jian Ding, Will
Technical Supervisor

This Test Report is issued by the Company subject to its General Conditions of Service printed overleaf or available on request and accessible at www.cpstlab.com. Attention is drawn to the limitations of liability, indemnification and jurisdictional issues defined therein. Unless otherwise stated the results shown in the test report refer only to the sample(s) tested. This test report cannot be reproduced, except in full, without prior written permission of the Company. Any unauthorized alteration, forgery or falsification of the content or appearance of this report is unlawful and offenders may be prosecuted to the fullest extent of the law.

Photo of the Submitted Sample



This Test Report is issued by the Company subject to its General Conditions of Service printed overleaf or available on request and accessible at www.cpstlab.com. Attention is drawn to the limitations of liability, indemnification and jurisdictional issues defined therein. Unless otherwise stated the results shown in the test report refer only to the sample(s) tested. This test report cannot be reproduced, except in full, without prior written permission of the Company. Any unauthorized alteration, forgery or falsification of the content or appearance of this report is unlawful and offenders may be prosecuted to the fullest extent of the law.

Test Result(s):

Description of Specimen : White powder

1. Lead, Cadmium, Mercury, Hexavalent Chromium, PBBs and PBDEs—RoHS Directive 2011/65/EU Annex II amending Annex (EU)2015/863 and amending Annex (EU)2017/2102

Test Items	Unit	Test Method	Result	MDL	Limit
Lead (Pb)	mg/kg	IEC 62321-5:2013, ICP-OES	N.D.	2	1000
Mercury (Hg)	mg/kg	IEC 62321-4:2013+A1:2017, ICP-OES	N.D.	2	1000
Cadmium(Cd)	mg/kg	IEC 62321-5:2013, ICP-OES	N.D.	2	100
Hexavalent Chromium (CrVI)	mg/kg	IEC 62321-7-2:2017, UV-VIS	N.D.	2	1000
Monobromobiphenyl	mg/kg	IEC 62321-6:2015, GC-MS	N.D.	5	-
Dibromobiphenyl	mg/kg	IEC 62321-6:2015, GC-MS	N.D.	5	-
Tribromobiphenyl	mg/kg	IEC 62321-6:2015, GC-MS	N.D.	5	-
Tetrabromobiphenyl	mg/kg	IEC 62321-6:2015, GC-MS	N.D.	5	-
Pentabromobiphenyl	mg/kg	IEC 62321-6:2015, GC-MS	N.D.	5	-
Hexabromobiphenyl	mg/kg	IEC 62321-6:2015, GC-MS	N.D.	5	-
Heptabromobiphenyl	mg/kg	IEC 62321-6:2015, GC-MS	N.D.	5	-
Octabromobiphenyl	mg/kg	IEC 62321-6:2015, GC-MS	N.D.	5	-
Nonabromobiphenyl	mg/kg	IEC 62321-6:2015, GC-MS	N.D.	5	-
Decabromobiphenyl	mg/kg	IEC 62321-6:2015, GC-MS	N.D.	5	-
Sum of PBBs	mg/kg	-	N.D.	-	1000
Monobromodiphenyl ether	mg/kg	IEC 62321-6:2015, GC-MS	N.D.	5	-
Dibromodiphenyl ether	mg/kg	IEC 62321-6:2015, GC-MS	N.D.	5	-
Tribromodiphenyl ether	mg/kg	IEC 62321-6:2015, GC-MS	N.D.	5	-
Tetrabromodiphenyl ether	mg/kg	IEC 62321-6:2015, GC-MS	N.D.	5	-
Pentabromodiphenyl ether	mg/kg	IEC 62321-6:2015, GC-MS	N.D.	5	-
Hexabromodiphenyl ether	mg/kg	IEC 62321-6:2015, GC-MS	N.D.	5	-
Heptabromodiphenyl ether	mg/kg	IEC 62321-6:2015, GC-MS	N.D.	5	-
Octabromodiphenyl ether	mg/kg	IEC 62321-6:2015, GC-MS	N.D.	5	-
Nonabromodiphenyl ether	mg/kg	IEC 62321-6:2015, GC-MS	N.D.	5	-
Decabromodiphenyl ether	mg/kg	IEC 62321-6:2015, GC-MS	N.D.	5	-
Sum of PBDEs	mg/kg	-	N.D.	-	1000

- Note:
1. mg/kg = milligram per kilogram = ppm
 2. N.D. = Not Detected (< MDL)
 3. MDL = Method Detection Limit
 4. "-" = Not Regulated

This Test Report is issued by the Company subject to its General Conditions of Service printed overleaf or available on request and accessible at www.cpstlab.com. Attention is drawn to the limitations of liability, indemnification and jurisdictional issues defined therein. Unless otherwise stated the results shown in the test report refer only to the sample(s) tested. This test report cannot be reproduced, except in full, without prior written permission of the Company. Any unauthorized alteration, forgery or falsification of the content or appearance of this report is unlawful and offenders may be prosecuted to the fullest extent of the law.

Di-(2-ethylhexyl) phthalate(DEHP), Benzylbutyl phthalate(BBP), Dibutyl phthalate (DBP), Diisobutyl phthalate (DIBP) Content—RoHS Directive 2011/65/EU Annex II amending Annex (EU)2015/863 and amending Annex (EU)2017/2102

Test method: With reference to IEC 62321-8:2017, analysis was performed by GC-MS.

Test Items	Unit	Result	MDL	Limit
Di-(2-ethylhexyl) phthalate (DEHP)	mg/kg	N.D.	50	1000
Benzylbutyl phthalate (BBP)	mg/kg	N.D.	50	1000
Dibutyl phthalate (DBP)	mg/kg	N.D.	50	1000
Diisobutyl phthalate(DIBP)	mg/kg	N.D.	50	1000

Note:

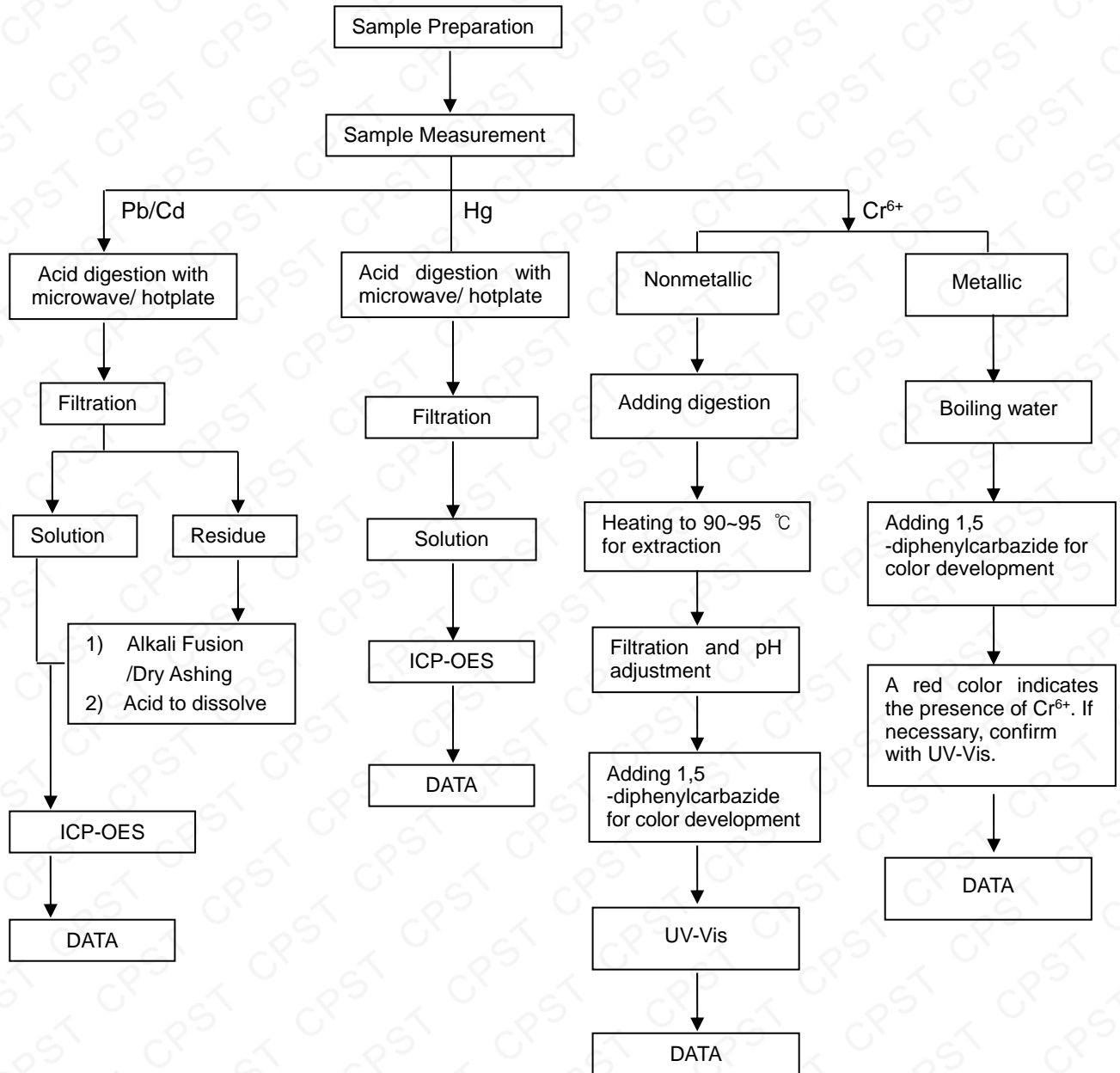
1. mg/kg = milligram per kilogram = ppm
2. N.D. = Not Detected (<MDL)
3. MDL = Method detection limit

This Test Report is issued by the Company subject to its General Conditions of Service printed overleaf or available on request and accessible at www.cpstlab.com. Attention is drawn to the limitations of liability, indemnification and jurisdictional issues defined therein. Unless otherwise stated the results shown in the test report refer only to the sample(s) tested. This test report cannot be reproduced, except in full, without prior written permission of the Company. Any unauthorized alteration, forgery or falsification of the content or appearance of this report is unlawful and offenders may be prosecuted to the fullest extent of the law.



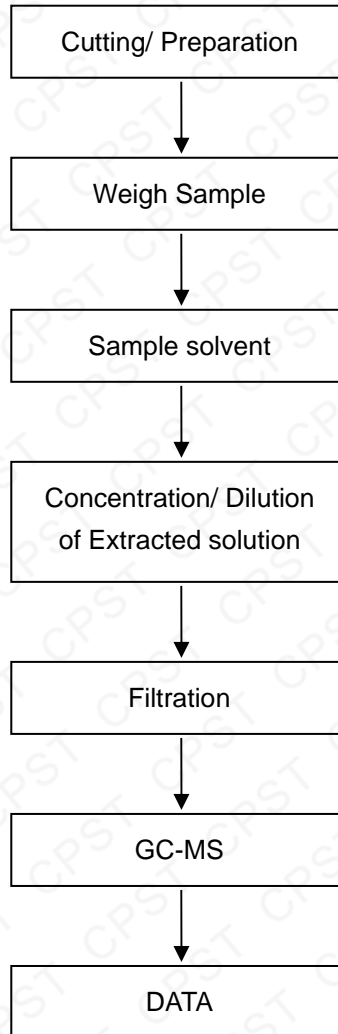
Pb/Cd/Hg/Cr⁶⁺ Testing Flow Chart

- 1) These samples were dissolved totally by pre-conditioning method according to below flow chart.
(Cr⁶⁺ test method excluded)



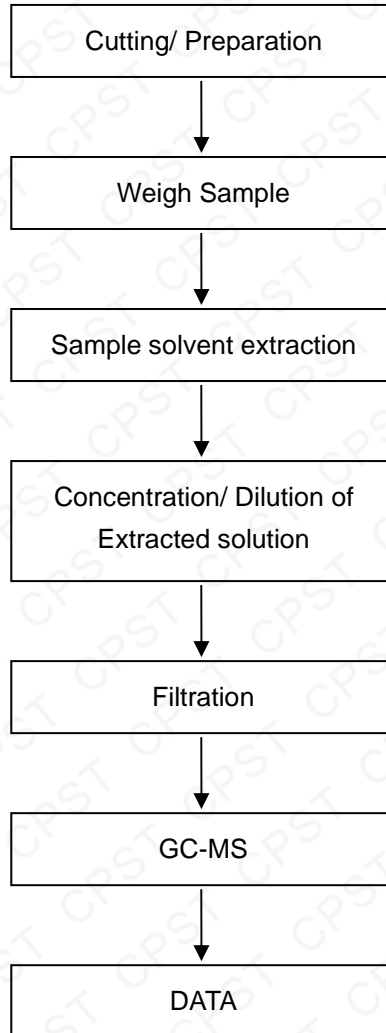
This Test Report is issued by the Company subject to its General Conditions of Service printed overleaf or available on request and accessible at www.cpstlab.com. Attention is drawn to the limitations of liability, indemnification and jurisdictional issues defined therein. Unless otherwise stated the results shown in the test report refer only to the sample(s) tested. This test report cannot be reproduced, except in full, without prior written permission of the Company. Any unauthorized alteration, forgery or falsification of the content or appearance of this report is unlawful and offenders may be prosecuted to the fullest extent of the law.

PBBs/PBDEs Testing Flow Chart



This Test Report is issued by the Company subject to its General Conditions of Service printed overleaf or available on request and accessible at www.cpstlab.com. Attention is drawn to the limitations of liability, indemnification and jurisdictional issues defined therein. Unless otherwise stated the results shown in the test report refer only to the sample(s) tested. This test report cannot be reproduced, except in full, without prior written permission of the Company. Any unauthorized alteration, forgery or falsification of the content or appearance of this report is unlawful and offenders may be prosecuted to the fullest extent of the law.

Phthalates Testing Flow Chart



*** End of Report ***

This Test Report is issued by the Company subject to its General Conditions of Service printed overleaf or available on request and accessible at www.cpstlab.com. Attention is drawn to the limitations of liability, indemnification and jurisdictional issues defined therein. Unless otherwise stated the results shown in the test report refer only to the sample(s) tested. This test report cannot be reproduced, except in full, without prior written permission of the Company. Any unauthorized alteration, forgery or falsification of the content or appearance of this report is unlawful and offenders may be prosecuted to the fullest extent of the law.